



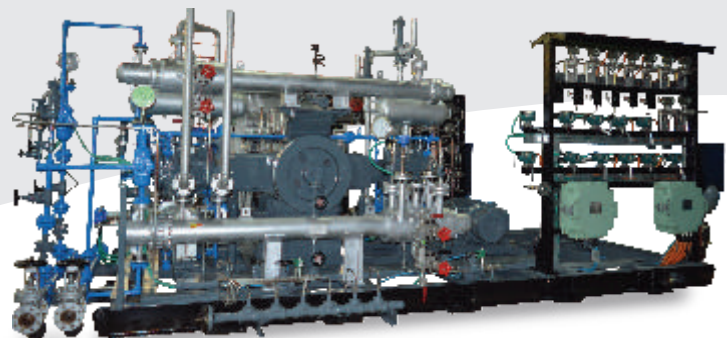
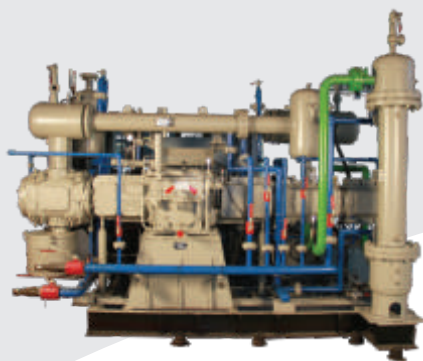
Enriching Lives

KIRLOSKAR PNEUMATIC CO. LTD.

A Kirloskar Group Company



Kirloskar Reciprocating Compressors





Established in the year 1958, Kirloskar Pneumatic Company Limited is a pioneer in compressed air and gas solutions. Kirloskar Pneumatic Company Limited, a flagship company in Kirloskar group is IMS certified company. KPCL has grown over the past 50 years by serving the customers with all types of air and gas compressors. The multi-product company has transformed with cutting-edge products and processes to meet the demands and applications.

The company has a strong presence in the global market with customers in more than 40 countries and partners in more than 10 countries. KPCL operates from Pune factory with a state-of-the-art facilities for research & development, manufacturing, assembly, testing, meteorology and other business processes.

Energy Efficient Selection

Compressor selection, on specific customer requirements are done through sophisticated software which offers energy efficient solutions.

The availability of proven cylinder groups ranging from 18mm to 660 mm diameter ensures wide range of flows and pressures.

Compliance to Standards

Kirloskar Gas Compressors can be designed as per API 618, API 11P, ISO 1940, ISO 10816, API 671, API 677, API 661, ASME Section VIII, TEMA, ASME B 31.1 & B31.3, API RP 520, OSHA, IEC 60079, IEC 60529, IS 2148 and IS 4758, to name a few.

Pre-tested for Leak proofing

Oil arrestor rings prevents contamination of gas with oil by isolating the oil in the first compartment of distance piece. Valves, valve seals, interconnecting piping, instrumentation, etc. pass through dual checks before installations. Rigorous testing of these packages ensures proper quality check for gas leak proof operation.

Pre-tested for performance

Completely assembled packages are tested on specially designed test beds at variable load settings.



Applications



Steel



Cement & Ready Mix



Food & Beverage



Air Separation



Textile



Oil & Gas/Petrochemical Refinery



Water & Waste Water Management



Fertilizer



Pet Blowing



Sugar & Co-generation



Power & Ash Handling



Chemical

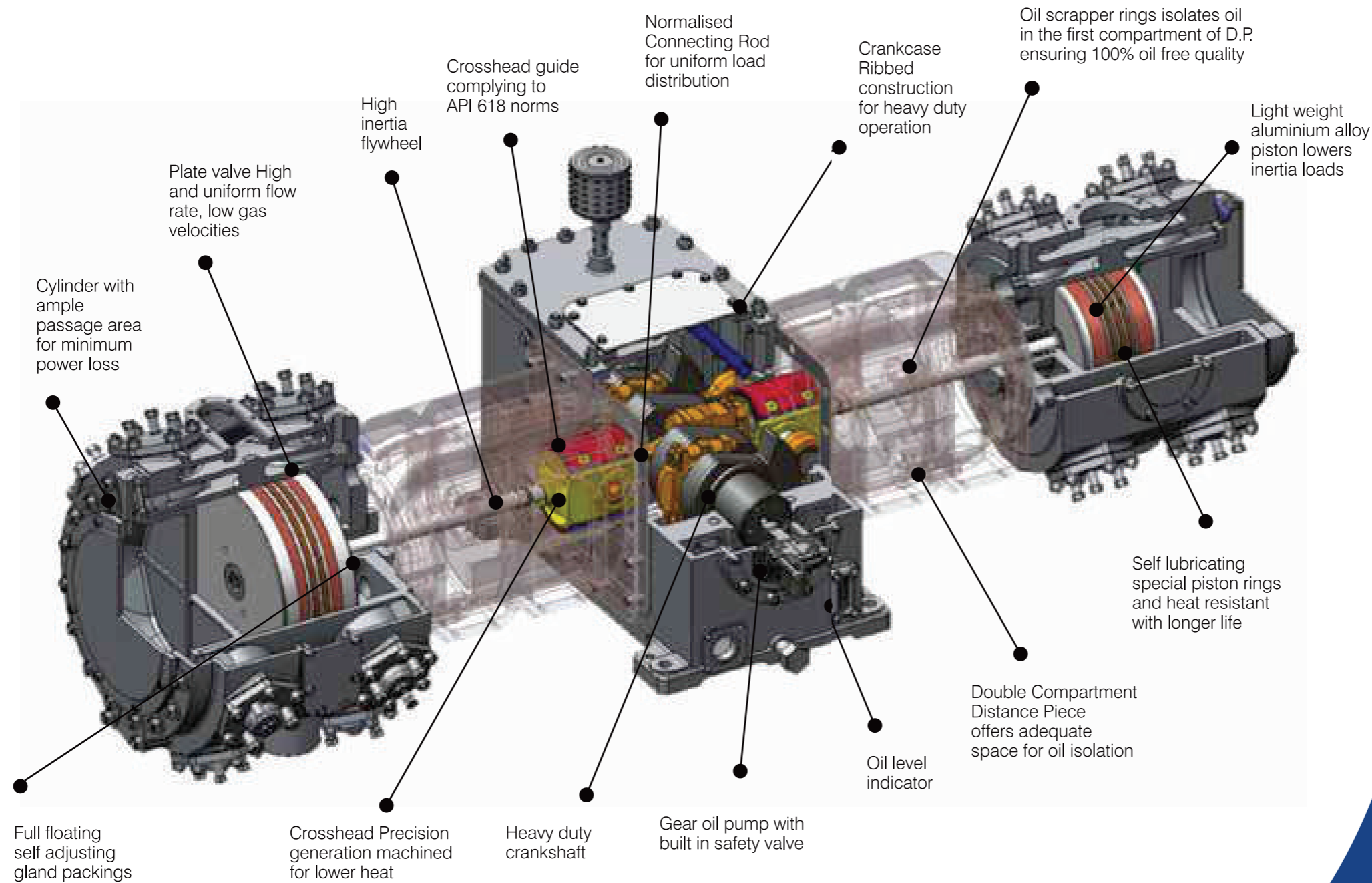


Pharma



Revolutionary Zero Couple Reciprocating Compressor.

Modular & Proven Heavy Duty Design | Energy Efficient
Pre-tested for Performance | Ready to use package



Fundamentals & Benefits

Reduced vibration <math>< 4.2 \text{ mm / sec}</math> against 17.8 mm /sec. specified in ISO Standard 10816-6 and also observed on our BOP Compressors.

Reduction in floor space

Skid on Anti Vibration Mounts (AVMs)

Ease of installation. No foundation is required

Saving in foundation cost

Quick commissioning

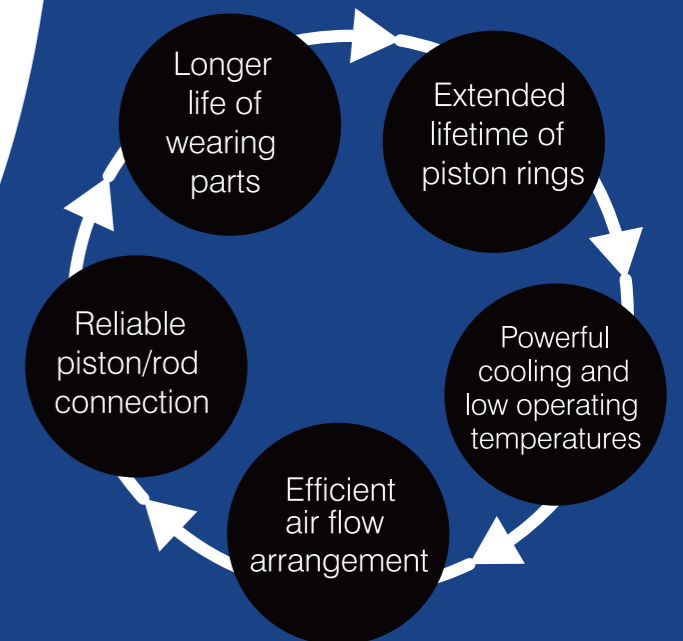
Latest Technology Edge

No competitor in India is having this feature

Reliable operation

Energy efficient versions are available at extra cost

Advantage of portability from one place to another



Balanced Opposed Piston (Water-cooled / Air-cooled)

Benefits-

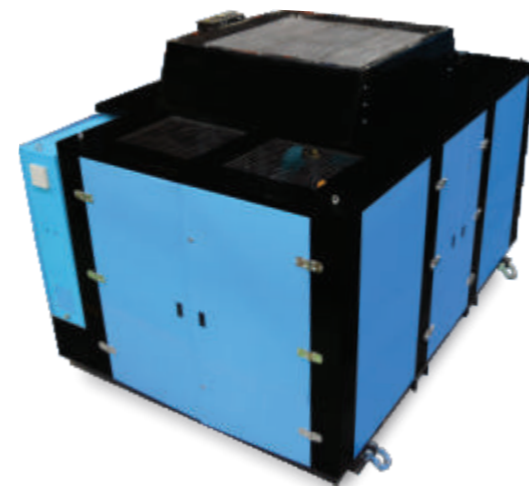
- ◆ 100% Oil-Free Air
- ◆ Easy and low installation cost
- ◆ Maximum reliability
- ◆ Low-cost maintenance
- ◆ Higher efficiency and lesser friction due to low reciprocating masses with lower inertia loads.
- ◆ Sophisticated PLC-control system
- ◆ Piston rings are made of carbon filled PTFE which reduces wear and tear of the rings and carbon-filled increase the life
- ◆ Long-distance piece, ensure separation of oil from the compression chamber
- ◆ Skid-mounted compressor package with anti-vibration mounts (Optional)

Balanced Opposed Piston compressors are highly efficient, maximum productivity, heavy-duty compressors developed by Kirloskar Pneumatic Co Ltd who have a long-standing experience in the compressor industry



CANOPY VERSION

- ◆ Canopy-Specially designed canopy to facilitate effective ventilation and ease of maintenance.
- ◆ Modular metallic canopy is acoustically designed to limit noise level of the package.
- ◆ Proper doors are provided for easy accessibility to internal components.
- ◆ Can be opened while compressor is in operation.



High Pressure Reciprocating Compressor

Kirloskar high pressure compressor is horizontal balance opposed reciprocating foundation mounted lubricated watercooled air compressors.

Benefits-

- ◆ Reliability due to superior design
- ◆ Superior valve quality
- ◆ Reliable pistons and piston rods
- ◆ Heavy-duty steel base construction
- ◆ Full customization options
- ◆ Sophisticated PLC-control system



Pet Reciprocating Compressor

Kirloskar reciprocating air compressors for PET blowing application are skid-mounted, low vibration, non-lubricated, water-cooled package.

Benefits-

- ◆ Highly reliable and efficient.
- ◆ Reliable-Designed for continuous operation.
- ◆ Easy to install, small footprint.
- ◆ Environment friendly-Low carbon footprint and food-grade air(Oil-free air)
- ◆ Skid mounted with anti-vibration mounts resulting in low vibration
- ◆ No foundation requirement
- ◆ Low operating and lifecycle cost.

Constructional features-

Low weight piston-

- ◆ Lower inertia force resulting in power saving.

Piston ring and rider ring-

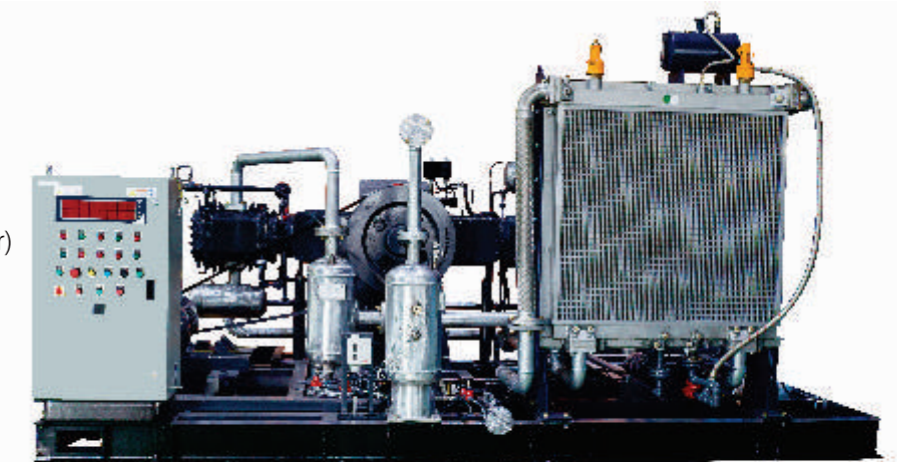
- ◆ Rider rings to take the load of the piston the during unloaded condition

Drive arrangement-

- ◆ Power is transmitted through V-belt and pulley arrangement leading to smooth and vibration-free operations.

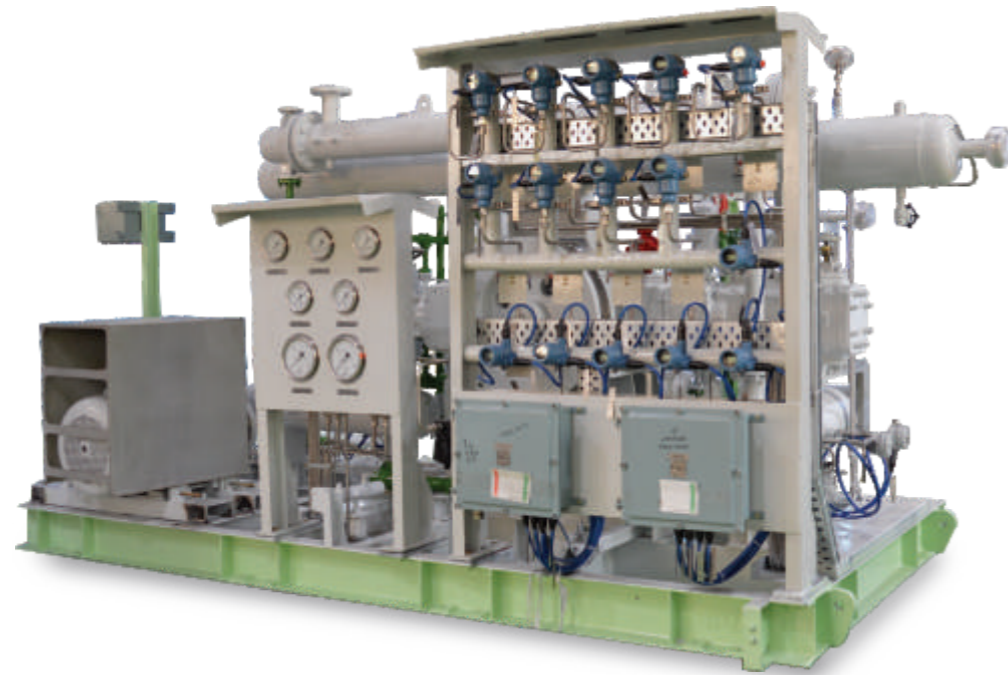
Sturdy base frame design-

- ◆ MS made base-frame with anti-vibration mounts leads to low vibration and low noise operations.
- ◆ Lifting points to ease lifting and maintenance.
- ◆ Easy mounting of the motor and perfect positioning for correct belt tension.



Kirloskar Reciprocating Gas compressor

Kirloskar Gas compressor provides an economical solution where limited space and continuous, low-volume service is a requirement. Its proven performance, versatile design.



Constructional Features

- ◆ **Self Lubricating Piston and rider rings:**
Special rings to ensure longer duty cycle.
- ◆ **Ribbed Crankcase:**
For heavy duty operation.
- ◆ **Heavy-duty Cylinder design:**
Hydrostatic testing at 1.5 times the rated pressure to ensure maximum strength.
- ◆ **Perfect Crosshead:**
Machine finished crosshead ensures perfect guiding.
- ◆ **Lightweight pistons:**
Reduced weight results in lesser inertia forces and hence higher energy saving.
- ◆ **Efficient Plate valves:**
Valves with greater flow area come with the standard package
- ◆ **Outstanding Cylinder Design and Selection**
With experience in virtually every type of service, our cylinders provide outstanding service and reliability. Our engineering expertise ensures that each cylinder provides maximum performance and reliability with minimum maintenance cost.
Cylinder materials include cast iron, nodular iron, cast steel, fabricated carbon or stainless steel, and forged steel.
- ◆ **Designed and Built with Precision**
The rigid frame design and counter weighted crankshaft minimize vibration and provide for low moments and minimal foundation requirements. Forged from high tensile strength alloy steel, the crankshaft is fully stress relieved and heat-treated. The bearing journals and crankpin are ground with precision and polished to meet exacting tolerances.
Rugged, precision-machined aluminum main and crankpin bearings are generously sized for best run-in and long-lasting service.

Vertical Reciprocating Compressor

Skid-mounted, self-contained package, designed for 100% oil free applications. Water-cooled and air-cooled version



Benefits-

- ◆ Robust construction of the compact design.
- ◆ High strength piston rings for longer life.
- ◆ Efficient valves for larger flow area.
- ◆ Reliable scrapper rings ensure continuous Oil Free Air.
- ◆ Reliable and low maintenance
- ◆ Fewer production downtimes

Features and Benefits



Efficient Plate valves

Large flow area | Special spring protection | High efficiency and long service life



Anti-vibration

No foundation required | Skid mounted compressor packages | Easy field installation | Specially designed rubber composite material



Piston and Rider rings

Efficient PTFE Piston rings for longer duty cycle
Enhanced working life of 8000 hours



Integrated Distance piece

Strategically designed Crosshead housing and Distance piece for a robust construction
Efficient oil- scrapper rings ensures zero oil carryover to second compartment



Endurance

- Reliability and efficiency in adverse conditions
- High altitudes
- High temperatures
- Robust Construction



Easy To Install

- Ready to install- quick startup
- No special foundations or anti-vibration precautions
- Lower footprint
- Minimal water and electrical connections



Reliable

- Pre tested compressor packages
- Extensive testing for torsional and inertia forces
- Low vibration design
- Sophisticated PLC - control system



Energy Efficient

- Optimum design to deliver maximum flow/kW
- Lower total operating cost
- Lower life cycle cost



SMART CONTROL PANEL

- The compressor is provided with 'Starter cum Control Panel', which is microprocessor-based and inbuilt in the compressor
- Display screen of controller - 3.2 inches graphic LCD display
- IP protection - IP 65 from front and IP from the rear
- Communication - can be easily communicated with DCS, Scada through RS 232 / RS 422 / RS 485, Ethernet
- Real-time clock - real time will be displayed on the controller and any alarm can be retained up to two weeks



VSD (Optional)



In-Built Kirloskar Variable Frequency Drives (VFD) as an option VFD helps in matching the compressor output with the plant load by varying the motor speed. The power consumption reduces in line with the plant load, this helps in reducing the power consumption thereby reducing the electricity bill.

VFD helps in maintaining low starting motor currents. Thus reduction of thermal & mechanical stresses on motors & belts during starts. Suitable for compressed air system with fluctuating demand.

Saves up to 35% energy through:

- Minimized idle time
- Reduction of working pressure
- Quick reaction on demand changes
- Smooth operation
- Less compressor wear
- Longer lifetime
- No starting current peaks



Online & Mobile monitoring (Optional)

- High-resolution display helps easy readouts
- Easy monitoring of equipment parameters.
- Icons enable access to all important settings.
- Notifications via Ethernet communication.

Single Stage Water Cooled Reciprocating Compressor

Model	Capacity	Working Pressure	Compressor Speed	Motor Rating
	(cfm)	kg/cm2g	RPM	KW*
HA2T-37-2.5-W	420	2.5	447	37
HA2T-37-4-W	328	4	410	37
HA2T-45-2.5-W	510	2.5	582	45
HA2T-45-4-W	398	4	498	45
HA2T-55-2.5-W	643	2.5	586	55
HA2T-55-4-W	487	4	609	55
HA2T-75-2.5-W	850	2.5	635	75
HA2T-75-4-W	600	4	750	75
HA2T-90-2.5-W	1000	2.5	750	90
HA2T-90-4-W	720	4	900	90
QL-110-2.5-W	1262	2.5	643	110
QL-110-4-W	935	4	516	110
QL-132-2.5-W	1472	2.5	750	132
QL-132-4-W	1118	4	617	132
QL-160-2.5-W	1570	2.5	800	160
QL-160-4-W	1360	4	750	160
QL-180-4-W	1450	4	800	180
HB2T-200-W	2299	2.5	600	200
HB2T-200-W	1937	3.5	600	200

Two Stage Water Cooled Reciprocating Compressor

Model	Capacity	Working Pressure	Compressor Speed	Motor Rating
	(cfm)	kg/cm2g	RPM	KW*
HY2T-22-7.5-W	151	7.5	488	22
HY2T-22-10-W	117	10	711	22
HY2T-22-12.5-W	109	12.5	575	22
HY2T-22-15-W	105	15	555	22
HA2T-30-7.5-W	205	7.5	451	30
HA2T-30-10-W	178	10	410	30
HA2T-30-12.5-W	134	12.5	827	30
HA2T-30-15-W	130	15	825	30
HA2T-37-7.5-W	253	7.5	555	37
HA2T-37-10-W	219	10	504	37
HA2T-37-12.5-W	197	12.5	455	37
HA2T-37-15-W	181	15	425	37
HA2T-45-7.5-W	308	7.5	575	45
HA2T-45-10-W	257	10	515	45
HA2T-45-12.5-W	239	12.5	554	45
HA2T-45-15-W	221	15	518	45
HA2T-55-7.5-W	375	7.5	825	55
HA2T-55-10-W	325	10	751	55
HA2T-55-12.5-W	292	12.5	575	55
HA2T-55-15-W	270	15	533	55
HA2T-75-7.5-W	512	7.5	741	75
HA2T-75-10-W	423	10	535	75
HA2T-75-12.5-W	389	12.5	900	75
HA2T-75-15-W	358	15	853	75
HA2T-90-7.5-W	544	7.5	754	90
HA2T-90-10-W	507	10	752	90
QM-110-7.5-W	745	7.5	743	110
QM-110-10-W	558	10	571	110
RM-132-7.5-W	924	7.5	527	132
RM-132-10-W	815	10	559	132
RM-160-7.5-W	1120	7.5	751	150
RM-160-10-W	988	10	578	150

Note-
 *Canopy version for all above models is available.
 *Aircooled version with or without canopy for all above models are also available.
 *Compressor of customized requirement of higher pressure, capacities are also available.

Note-
 *Canopy version for all above models is available.
 *Aircooled version with or without canopy for all above models are also available.
 *Compressor of customized requirement of higher pressure, capacities are also available.

Three Stage Compressors

Model	Compressor Speed		Working Pressure		Free Air Delivery		
	RPM		kg/cm2g		m3/min		
	Min	Max	Min	Max	Min	Max	
HA	3HA2T	400	750	16	40	2.7	8
	3HA2BIST	400	750	16	40	5.5	10.3
	3HA2TERT	400	750	16	40	2.9	5.6
	3HA4T	400	750	16	40	7.1	16
	3HA4BIST	400	750	16	40	8.4	16
	3HA4TERT	400	750	16	40	13.3	25.7

Four Stage Compressors

Model	Compressor Speed		Working Pressure		Free Air Delivery		
	RPM		kg/cm2g		m3/min		
	Min	Max	Min	Max	Min	Max	
HA	4HA2TERT	400	750	30	120	3.6	6.6
	4HA4T	400	750	30	120	5.3	10
	4HA4BIST	400	750	30	120	6.4	12
	4HA4QT	400	750	30	120	11.6	17.5
	4HA4PT	400	750	30	120	13.3	22
	4HA4TERT	400	750	30	120	7.4	14
	HB	4HB4BIST	375	600	30	120	19.4
4HB4BISNT		375	600	30	120	25	40.3
4HB4TERT		375	600	30	120	30.7	49.7

Lubricated Compressors

Four Stage Compressors

Model	Compressor Speed		Working Pressure		Free Air Delivery		
	RPM		kg/cm2g		m3/min		
	Min	Max	Min	Max	Min	Max	
HA	4HA2TER	400	750	30	120	3.6	6.8
	4HA4	400	750	30	120	5.5	10.3
	4HA4BIS	400	750	30	120	6.6	12.3
	4HA4Q	400	750	30	120	11.9	18
	4HA4P	400	750	30	120	13.3	22
	4HA4TER	400	750	30	120	7.4	14
HB	4HB4BIS	375	600	30	120	19.4	31.8
	4HB4BISN	375	600	30	120	25	40.3
	4HB4TER	375	600	30	120	30.7	49.7

Five Stage Compressors

Model	Compressor Speed		Working Pressure		Free Air Delivery		
	RPM		kg/cm2g		m3/min		
	Min	Max	Min	Max	Min	Max	
HA	5HA4	400	750	120	250	3.8	8.3
	5HA4BIS	400	750	120	250	4.6	10
	5HA6	400	750	120	250	4.8	10.5
HB	5HB4BIS	375	600	120	250	18.6	39.7

Six Stage Compressors

Model	Compressor Speed		Working Pressure		Free Air Delivery		
	RPM		kg/cm2g		m3/min		
	Min	Max	Min	Max	Min	Max	
HA	6HA4	400	600	250	400	2.4	4

Kirloskar PET Compressors

Model	Stages	Working Pressure Kg/cm ² g	Free Air Delivery		Motor Rating	
			m ³ /hr	cfm	Kw	hp
PKE-05-RE	3	32	98	58	18.5	25
PKE-10-RE	3	32	190	112	30	40
PKE-20-RE	3	42	214	126	37	50
PKE-30-RE	3	42	282	166	45	60
PKE-40-RE	3	42	355	209	55	75
PKE-50-RE	3	42	471	277	75	100
PKE-60-RE	3	42	575	338	90	120
PKE-70-RE	3	42	707	416	132	180
PKE-80-RE	4	42	887	522	160	215
PKE-90-RE	4	42	1046	616	180	240
PKE-100-RE	4	42	1291	760	200	270
PKE-110-RE	4	42	1646	969	250	335

Vertical Reciprocating Compressor

Model	FAD Range m ³ /min		Pressure Range Kg ² /cm (g)		Motor Rating Kw	
	Min	Max	Min	Max	Min	Max
TC - 50	0.66	1.2	1	9	3.7	15
TC-100	1.2	2.3	1	9	5.5	22
TC-200	2.4	4.7	1	9	7.5	37

Note:
 All packaged versions include compressor, motor, aftercooler, control panel suitably mounted on deck. Air Dryer and Receiver are optional supplies.
 Self contained packaged versions include, in addition to above, a close circuit water cooling system thus eliminating the need for an external water supply.
 The above performances are given at sea levels and 30°C suction condition.
 Also available in silenced versions.
 FAD and Power tolerance as per IS-5456 latest edition.
 *Compressor of customized requirement of higher pressure, capacities are also available.

After Market Support

Air compressor division (ACD) provides after sales service (for products in warranty & out of warranty) through head office and its wide spread network of branch offices, channel partners, service franchisees.

The spare parts division caters to the need of all spare parts of reciprocating compressors, centrifugal compressors, screw compressors, railway brake compressors and high pressure compressors. This is further supported by a well spread dealers network all over India.

The training is provided at client site location after commissioning of our compressor system.

We also have our own customer training center for conducting seminars & service workshops for the client representatives at our head office as per agreement.



Note: Since KPCL pursue continual growth and up gradation, we reserve the right to modify above data/specifications in accordance with improved design

Our Dealer Network across India



We Ensure Prompt Service & Support
with over 60+ Dealers in India



Enriching Lives

KIRLOSKAR PNEUMATIC CO. LTD.

A Kirloskar Group Company

REGD. OFFICE & WORKS : PUNE : Hadapsar Industrial Estate, PUNE 411 013.

Ph : 020 - 26870133 / 26727000 Fax : 020 - 26870297 / 26870634. Email : acdmktg@kirloskar.com

BRANCH	TELEPHONE	FAX	E-MAIL
MUMBAI : 1002, 10th Floor, Vikas Centre, Dr. C.G. Road, Opp. Bombay Presidency Golf Club, Chembur (East), Mumbai 400 074	022-25219500	022 - 25181313	sandeep.tiwari@kirloskar.com netra.ghangurde@kirloskar.com
DELHI : 607, Manjusha Building, 57 Nehru Place, New Delhi 110 019	011 - 26289962, 26421346	011 - 26429685	acdmktg@kirloskar.com
BANGALURU : NO 102, 1st Floor, Andree Capitol, 8/1 KH Road, Bangaluru 560 027	080 - 22270029, 22270079	080 - 22270045	ccsblr@kirloskar.com
CHENNAI : 1st Floor, Elcanso Complex No. 10, Cosa Major Road, Egmore, Chennai 600 008	044 - 28193066, 28190436, 28192092, 30910143/0144	044 - 28194937	kpclchnacd@kirloskar.com
HYDERABAD : 3-5-907, 403-404, Mahavir Lok, Himayatnagar Hyderabad 500 029	040 - 23260743, 23260746,	040 - 23260171	kpclhyderabad@kirloskar.com
KOLKATA : 15 GaneshChandra Avenue, 9th Floor, Kolkatta 700 013	033-22119080, 22119081, 22111905	033 - 22365586, 22116948	acdmktgkol@kirloskar.com
VADODARA : Chi Chi Tower, A, Killol Children Hospital Lane, Tana Apartment, Ellora Park, Subhanpura, Vadodara 390007	0265 - 2284604, 2284605, 2284606, 3096787	0265 - 2280095	vinay.sen@kirloskar.com



An IMS Certified Company

www.kirloskarpneumatic.com

CIN: L29120PN1974PLC110307

